

Prepared by: Richard Drapeau
 Project: R.W. Creteau Technology Center
 General Contractor: Harvey Construction

Date: Tue 9/4/18

Weather Conditions

Sunny / 82-64

Onsite Construction Personnel

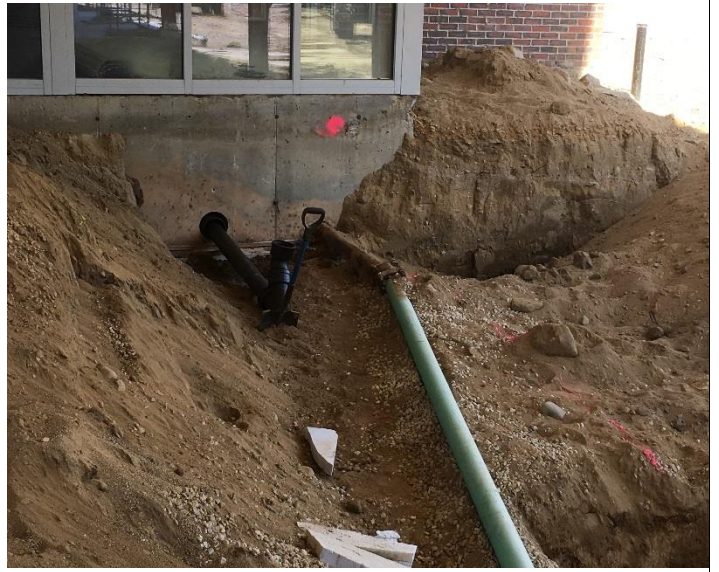
<i>Subcontractor</i>	<i>Approx. Number of Personnel</i>	<i>Comments</i>
Harvey Construction:	1-Superintendent 2-Labor	Supervising Phase-3 new addition construction and Phase-4 1 st Fl. Rm.143 Engineering renovation and Conducted 2PM OAC Meeting
Academy Roofing	0-Foreman 0-Labor	Not on site
Associated Scaffold	0-Foreman 0-Labor	Not on site
Interstate Electric	1-Foreman 3-Labor	Completing wiring for existing site lighting Rough-in for Eng. Rm. framing
John Carter Sprinkler	0-Foreman 0-Labor	Not on site
AP Dailey	0-Labor	Not on site
Johnson & Jordon	1-Foreman 3-Journeymen 1-Controls 1-Mech. Insulator	Completing and monitoring misc. mechanical systems items. Installing underground water piping for new addition.
NH Demolition	0-Foreman 0-Labor	Not on site
John C Pratt	0-Foreman 0-Labor	Not on site
DS Specialties	0-Labor	Not on site
Red Star Building Systems	0-Foreman 0-Labor	Not on site
SD Szetela Masonry	0-Forman 0-Labor	Not on site
SUR	1-Foreman 1-Labor 2-Operators 1-Trucker	Continuing excavation for utilities & foundations.
SW Cole	0-Tech	Not on site
White Diamond Painting	0-Labor	Not on site

Photos:

Cored Hole For Relocated Waste Line In Day Care Entrance 9-04-18 (1)



Relocated Waste Line Pipe Fittings 9-04-18



Stone Base For Concrete Footings 9-04-18



Stone Base For Concrete Footings Below Bridge 9-04-18 (2)

